



Here is the finished box of cigars.



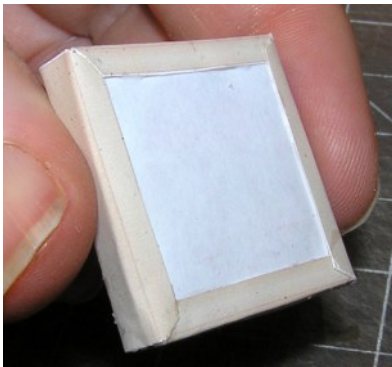
Make the clock box.



Glue the clock face panel onto the flat surface of the clock box.



Cut center out of fireplace front.



Glue the bottom long tab to the blank back side of the picture panel of the fire.



Fold under the tabs on mantle shelf and glue in place to blank underside of mantel shelf.

Glue mantel shelf to top of fireplace.



Finished fireplace.



Cut the center from the frames, then cut the frames.

Use the patterns to cut the two acetate pieces to be used as faux picture glass.

Glue acetate to the back of the cut frames.



Glue the pictures to the back of the frames.



To emboss these little plates, use the mechanical pencil with the eraser removed.

Sandwich the plate between the hollow shaft left by the eraser. Use the eraser to push down on the plate.



Here is how the plate looks when embossed.





To mount the plates for use over the mantel, cut a thin strip of paper shorter than the length of the mantel. Glue four of the plates to the strip of paper overlapping them slightly.



Wall phone is simply a box. Glue with fast grab white glue.



Fold the stand-up photos in half lengthwise. Glue blank sides together. Let dry. Next, fold in half once again. Remember to use the ruler to get the best folds.



Glue tab between each panel of the shade to respective panel.

Next create a cylinder about the same diameter as the top opening of the shade. Make sure the bead will fit on top of the shaft.

Glue the bead on top.



Roll table cylinder to diameter of red dot on underside of table top. Glue the cylinder's edge in place.

Fold the table top squares perfectly and use glue stick to glue the blank sides together.



Glue the shade onto the pearl.



follow and cut out the top circle when the glue is dry.

Glue the table cylinder to the table top.



Fold the trunk box and lid. Note how the lining panels are folded outward. This does make it easier to glue the side tabs. Glue the side tabs of the main box and use tweezers to get a good bond.

Do the same for the trunk lid

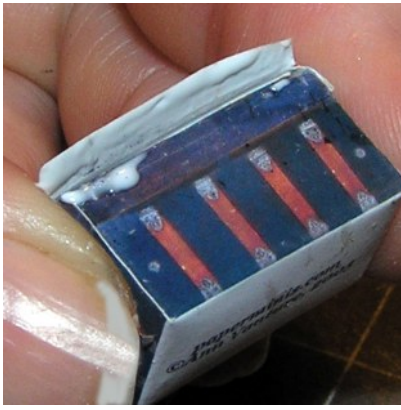


Here's a table arrangement with the completed table.

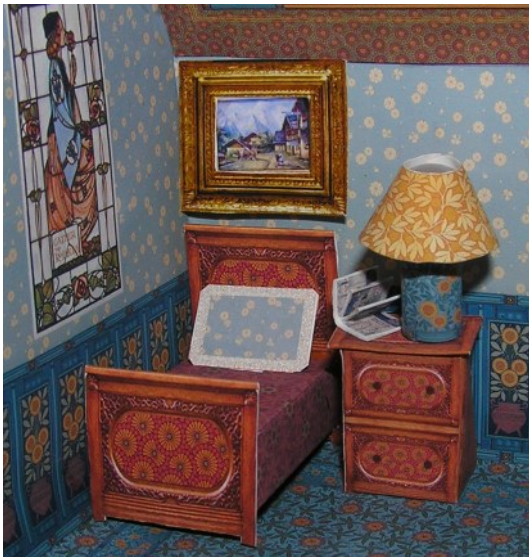


Glue the lid and bottom lining into place.





Make sure the lid fits well. Then glue the loose panel to the back of the trunk.



©Copyright for Paper Minis projects  
held by Ann Vanture, 2011  
All rights reserved (worldwide rights)  
<http://www.paperminis.com>