

**Victorian Dollhouse for a 1:12 Dollhouse**  
**Scale is close to 1:144**  
**Paper Minis, Prod. No. t1iso14**

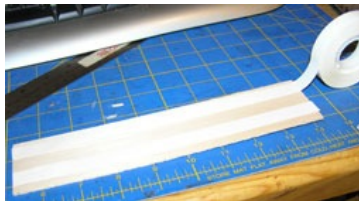


**READ INSTRUCTIONS BEFORE STARTING ASSEMBLY**

**Required tools and supplies:**

- X-acto knife and fresh blade(s)
- A thin metal straightedge ruler. Make fold lines by pressing against edge of the ruler.
- Two-sided tape
- Tweezers and detailing scissors
- Good cutting mat (cardboard will ruin your blades **and** project)
- Fast-grab, quick-dry white craft glue that dries clear
- Clear Gel strong Tacky Glue
- Toothpick for spreading bonding gel
- Small piece of aluminum foil to use as a glue pot
- Flat artist brush for applying glue to walls and small water container.

On-line tutorial found at: <http://www.paperminis.com/tutorial-library/kit-tutorials/t1iso14-victorian-house.pdf>



1. Lay down two lines of double-faced tape to the wood pieces.



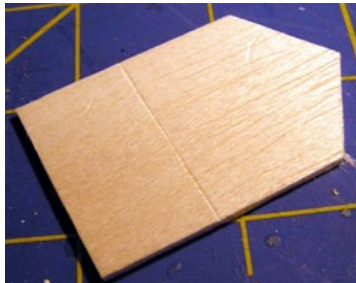
2. Carefully place the pattern pieces on the tape placed on the wood.



3. Cut the pieces as carefully and as perfectly as possible. Make sure your blade is fresh. Do not remove the paper from the wood. However, do not leave on indefinitely for the tape may not come off the wood if aged.



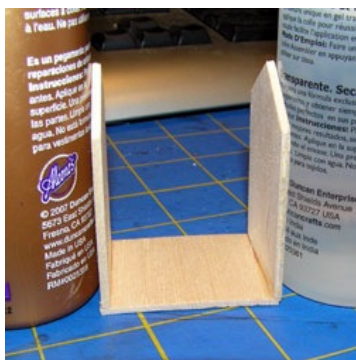
4. Score along the bottom line in the middle as shown in the photo. You do



not want to cut the wood, just merely mark it so you know where to glue the floor/ceiling. See the above photo.



5. Prepare for assembly. Lay out the pieces as shown above.



6. Use the clear gel and glue the "peaked" sides on top of the base, one side at a time. It is important to be patient and wait for glue to dry between steps. Prop sides with straight heavy items such as the glue bottles.



7. Glue back of house in place. Panel should rest on top of base. All edges should be flush. If not you, will have trouble making the rest of the project pieces fit squarely.



This is how your project should look at this juncture.

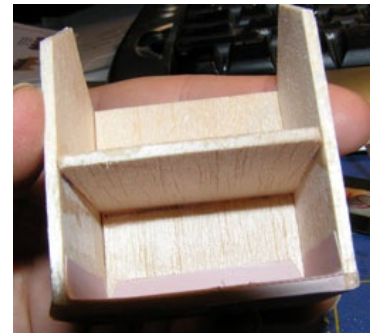


8. Cut out all the paper pieces. Take the pink floral carpet and fold accordingly. Check to ensure proper fit before gluing. Fold the extra length to the underside of the house.

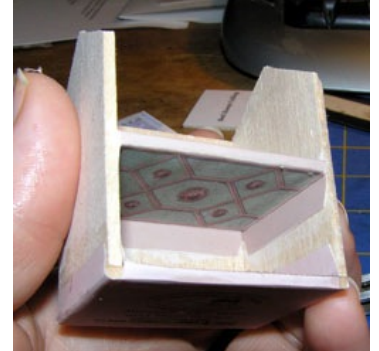
Use the flat paint brush and paint white glue to wood floor and up the sides, ensuring high enough coverage for the tabs. You may need to cut glue with a little water. Gently press carpet and tabs in place. NOTE: With each piece, rub until you know there are no bubbles or loose edges. Keep a clean paper towel close at hand to clean your fingers.



9. Glue the underside panel in place. Remember to paint the glue up the outer surfaces of the sides.



10. Glue the middle ceiling/floor. I used a thin felt pen to mark the scoring. The bottom edge of the piece should line up with the scored marks. Let it dry!



11. Fit and glue the green ceiling in place. Wrap the edge to the upper floor.



12. Fold at the wallpaper wall corners. Make sure the wallpaper for the first floor fits. Fold and wrap the extra length to the outside surfaces of the house.



13. Fit and glue the medallion carpet.

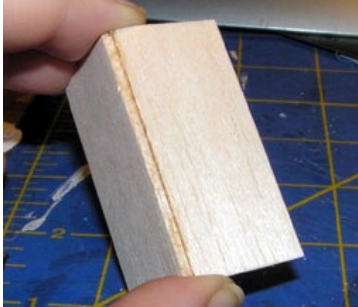


©Copyright for Paper Minis projects held by Ann Vanture, 2010  
 All rights reserved (worldwide rights)  
<http://www.paperminis.com>





14. Glue the final ceiling wood panel in place. I used dental floss to hold it tightly in place. While that dries, go to next step for roof assembly.



15. Glue the edge of the short piece of roof to the underside of the long roof piece. See the next photo if you want to see arrangement from the side.

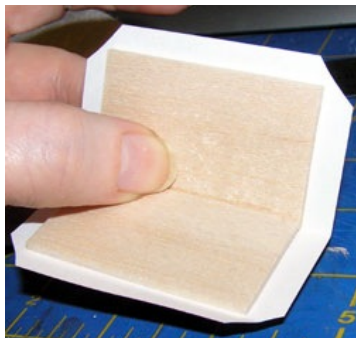


16. DO NOT GLUE ROOF TO HOUSE. Lay the roof perfectly on top while the glue of the peak dries. This will give you the perfect pitch. Note the long piece of roof is to the back of the house (open side is the back).



17. Glue the blue ceiling in place.

18. Return to the roof. Fold roof down center line. Clip the eaves area at each end of that center line. Center the piece to the roof. MAKE SURE THE LONG side is positioned over the long piece! Paint the top side of the roof with glue and lay paper on roof. Set the roof aside. See next photo.



19. Install wallpaper for second floor.



20. Check the fit of the house's outer shell. Paint outside wood walls with glue and gently press paper against glue. Make certain that glue is painted up to edge. Again, make sure all bubbles and bumps are worked out. DO NOT GLUE DOWN TABS ALONG PEAK



21. Return to the roof piece. Paint glue along eaves and wrap to underside of roof.



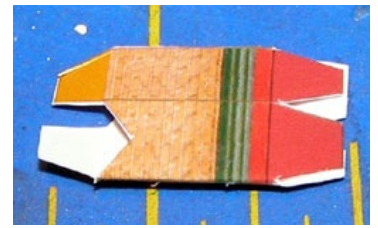
22. Return to the house peak. Paint glue around perimeter and wrap edging as shown above.



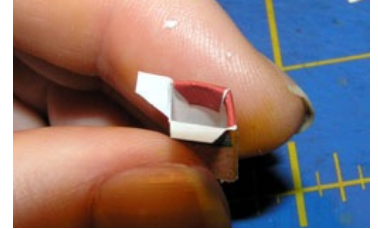
23. Take six of the tiny square embellishments and glue to each intersection of borders.



24. Use the Clear Gel glue and glue roof in place. REMEMBER TO PLACE LONG SIDE TO BACK OF HOUSE.



25. Fold chimneys at all junctions. Glue the long side tab to the inner surface of each chimney.



26. Fold and glue the four red tabs to the interior of each chimney.



27. Glue the dark gold tabs to the roof peak as shown above.



©Copyright for Paper Minis projects held by Ann Vanture, 2010  
All rights reserved (worldwide rights)  
<http://www.paperminis.com>

