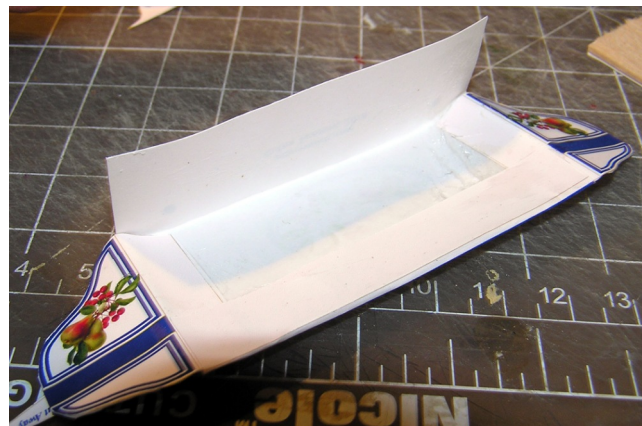


f1is009c Fruit & Vegetable Kitchen Shelf
f1is010c Rooster Motif Kitchen Shelf
to Scale for 1" Scale Dollhouses



Required tools and supplies:

- X-acto knife and fresh blade
- A thin metal straight-edge ruler and/or bone folder.
Make fold lines by pressing against edge of the ruler.
- Detailing scissors
- Good cutting mat
- Fast-grab, quick-dry white craft glue that dries clear
- A glue stick
- Small piece of aluminum foil to use as a glue pot
- Slender artist's paint brush to apply glue



©Copyright for Paper Minis projects
held by Ann Vanture, 2009
All rights reserved (worldwide rights)
<http://www.paperminis.com>