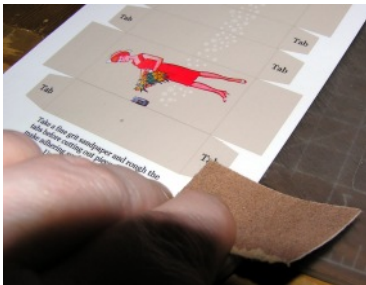


Barbie and Skipper Carry Case
to Scale for 1:6 Fashion Dolls
Paper Minis, Prod. No. tfdoo6b

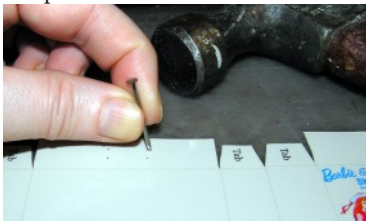


Required tools and supplies:

- X-acto knife and fresh blade(s)
- A thin metal straightedge ruler and 2 small vise grips. Make fold lines by pressing against edge of the ruler.
- Fine grit sandpaper
- Tweezers and detailing scissors
- Good cutting mat (cardboard will ruin your blades **and** project)
- Fast-grab, quick-dry white craft glue that dries clear
- Small piece of aluminum foil to use as a glue pot



1. Before cutting the case, take sandpaper and vigorously scuff the tabs and points for velcro dots.



2. Use nail and hammer to poke holes for handles.

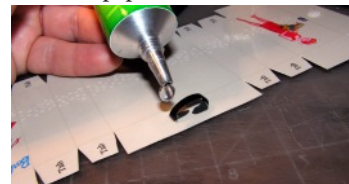


3. Thread thinner wire through holes. Twist flat on underside. Leave some slack for the leatherette handle on the top side.



4. Cut handle and thread through wire hoops as shown. If this is too difficult

for you, use the alternate pattern and cut a shorter handle. You will glue the handle ends over the holes. Make sure to scuff the glue points with sandpaper first.



5. Use bonding glue to glue leatherette handle. Take care not to get glue on laminate or the finish will be ruined.



6. Pinch bond with tweezers.



7. Finished handle.



8. Stick on velcro dots at scuffed markers.



- Slender artist's paint brush to apply glue. This will be used for most of the glueing.
- Fresh bonding glue made for bonding slick surfaces
- Thin nail
- Hammer and pliers

A PDF version of this tutorial can be found on the on-line tutorial library at:
<http://www.paperminis.com/tutorial-library/kits-tutorials.htm>
Go to the category titled 12"-14" DOLL SCALE (1:6 scale)
The PDF file will allow you to zoom in on the photos.



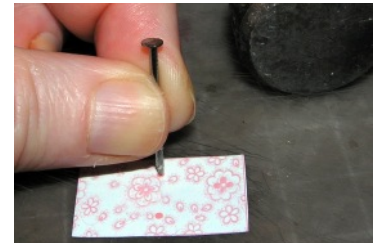
9. Use folding gizmo to make perfect creases. **DO NOT MAKE CREASES BY HAND!** There is a tutorial on-line at <http://www.paperminis.com/tutorial-library/need-to-know-tutorials.htm> Pick "Ann's Tool Box" to see how to make this gizmo and other tips.



10. This is how the case should look with all creases made.



11. USE TEST PIECES TO TEST YOUR BONDING GLUE. SOME GLUES WILL BLEED THROUGH! Use bonding glue and glue scuffed tabs to create case shape as shown here.



12. Use the nail to poke the 2 holes in the ceiling of the right compartment.



12. Cut about a 2" length of the thicker wire with your pliers. Thread an end through first hole. Use the pliers to bend the wire as shown in the previous photos. Trim the ends. Make sure the wire lies flat against the paper.

USE TEST PIECES TO TEST YOUR FAST GRAB GLUE.



13. Use a paint brush to apply fast grab glue. Press panel against ceiling. Use tweezers to get a perfect bond. Do not build the drawers yet.



14. There is enough thick wire to make two more clothes rod on the main ceiling panel. If you prefer, just glue the panel to the ceiling as shown.



15. Fold the doll separator and glue into place in the left compartment. Make sure to test the size before gluing into place.



16. Fold doll inserts and place into their compartments. Do not glue them in place in case you get actual dolls in the future



17. Make the 3 drawers.



18. Place drawer inserts into the Barbie drawer and the Skipper drawer.



19. Fold the double-drawer frame. Place around the double-drawers and make sure the fit is good. Glue end tab of double-drawer frame.



20. Glue the double-drawer frame into the main compartment.



21. Repeat the steps above for the single-drawer frame.



22. Glue the single-drawer frame into place. Note: do not over work the hinged seams. Case is designed to be displayed open.



23. You have a choice of making hangers for the clothing, or you can elect to use the paper hanger version. Use the lighter wire for hangers. There is enough wire for 4 hangers. Although, you will see that you do not necessarily need a complete hanger.



24. Here is a sample of a full hanger.



25. Cut out all 8 wardrobe pieces. Make sure to use a proper cutting mat and a fresh blade. Place back to back to check fit.



26. Notice how simple my hanger is for this outfit. Paint surface with glue. Place front to back.



27. Allow to dry thoroughly, then trim any unevenness on either side.



28. Use felt pens or craft paint to patch any exposed white edges.



29. This is an example of the wardrobe using paper hangers. Light blue craft paint has been used to patch white spots on the hangers.



30. Here are the clothes hanging in the compartment. There is no reason why you can't make clothes out of fabric as long as you have patience!



©Copyright for Paper Minis projects held by Ann Vanture, 2010
All rights reserved (worldwide rights)
<http://www.paperminis.com>